




GAZEBO CANOPY (4.5M × 3M)

Size

This template is 25% scale of full size, and must not be re-sized or scaled.

Areas & Marks

-  **Bleed lines**
Artwork must extend to these lines. Any space between this line and the safe area line must only be used as a quiet area.
-  **Cut and finish lines**
Cut line and approximate perimeter of the finished graphic.
-  **Safe area lines**
Important content (text, logos etc.) must be kept within these lines.



Artwork Requirements

Artwork must be supplied:

- At the exact size of this template
- With all fonts outlined
- With all images embedded
- With all design elements on the Design layer
- With background/quiet content all the way to the bleed line(s)
- With all important content inside the safe area(s)
- With none of the template guide lines included or flattened
- With all template elements and text removed
- With no crop marks, bleed marks, colour bars or other registration marks present
- As either PDF (preferred), AI or EPS format
- With exported files checked (e.g. in Adobe Acrobat/Reader) that all design elements are included

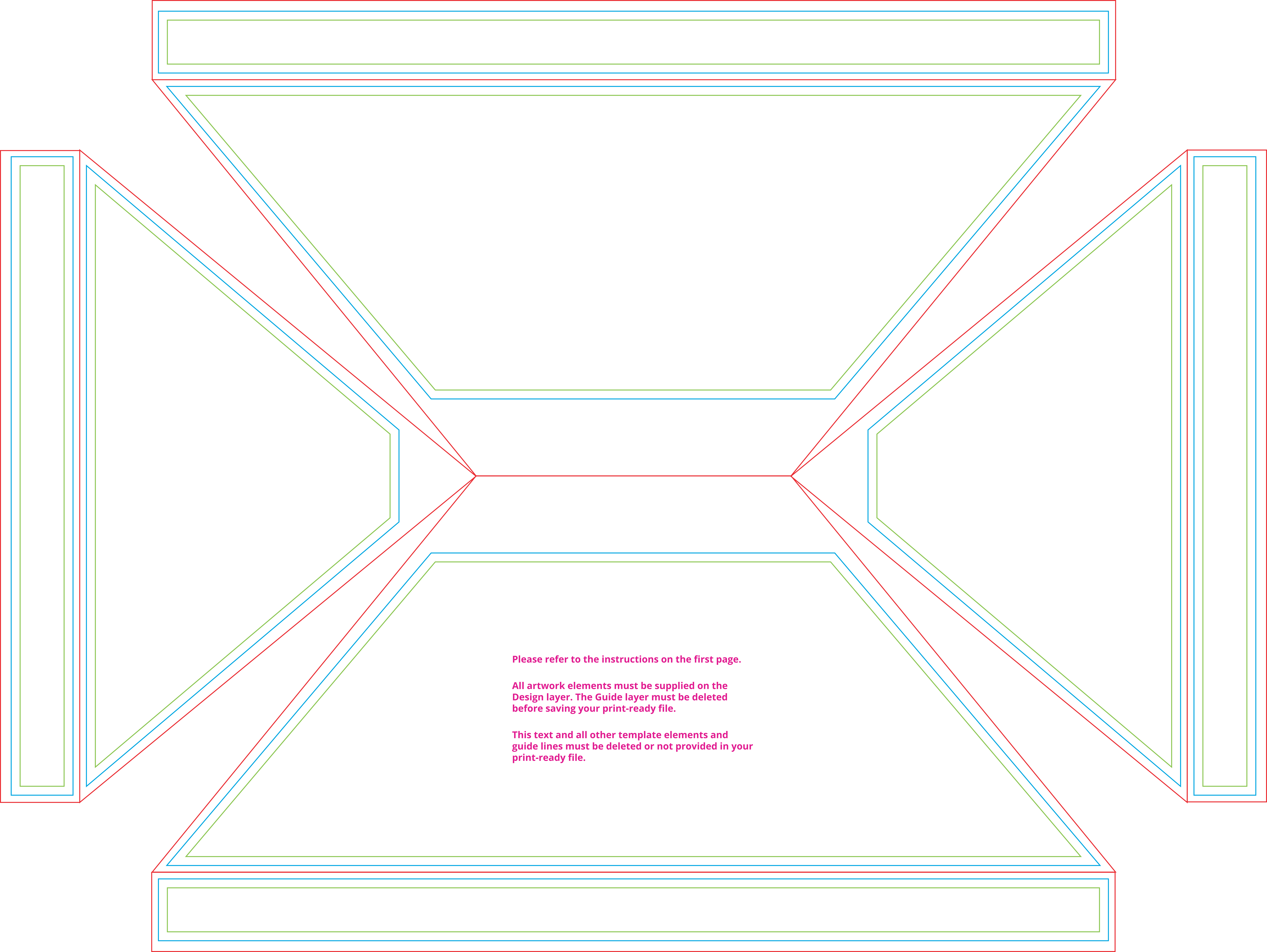
For a full list of artwork requirements, please refer to our website.

Layers

-  **Design.** Must be used to create and supply your design.
-  **🔒 Guide.** Must not contain any of your design elements. Must be deleted before saving your print-ready file.

Considerations

While we make every effort to finish these graphics as accurately and consistently as possible, due to the nature of printing, cutting and finishing fabrics, some material movement and minor imperfections in alignment can be introduced and cannot always be avoided. For this reason, important content, such as logos and text, should not escape the safe areas. Please also note that it may not be possible to perfectly align design elements that are intended to span sides of the canopy.



Please refer to the instructions on the first page.

All artwork elements must be supplied on the Design layer. The Guide layer must be deleted before saving your print-ready file.

This text and all other template elements and guide lines must be deleted or not provided in your print-ready file.